

Hugo Alfvén

Aftonen

AFTONEN

(EVENING)

Text by
NORMAN LUBOFF

Herman Sätherberg

HUGO ALFVÉN

Quietly

pp

Soprano

Still, still, the woods, ra - diant, the
Sko - gen står tyst, him - len är

Alto

Still, still, the woods, ra - diant, the
Sko - gen står tyst, him - len är

Tenor

Still, still, the woods, _____
Sko - gen står tyst, _____

Bass

Still, still, the woods, _____
Sko - gen står tyst, _____

Piano
(For rehearsal only)

pp

heav'ns, _____ Dim, dis-tant horns fill the air with their
klar. Hör, bu - ru tju - san - de vall - bor - net

heav'ns, _____ Dim, dis-tant horns fill the air with their
klar. Hör, bu - ru tju - san - de vall - bor - net

ra - diant, the heav'ns, Dim, dis-tant horns fill the air with their
him - len är klar. Hör, bu - ru tju - san - de vall - bor - net

ra - diant, the heav'ns, Dim horns ech - o,
him - len är klar. Hör, vall bor - net

pp ©Copyright 1942 by A-B Carl Gehrman's Musikförlag, Stockholm.
"For the U.S.A. (incl. all its possessions and dependencies) and Canada:

ech - o. *poco rit.* *a tempo*
 lul - lar. *pp*

ech - o. (Hum)
 lul - lar. *poco rit.* *a tempo*
pp

ech - o. (Hum)
 lul - lar. *poco rit.* *a tempo*
pp

ech - o. (Hum)
 lul - lar. *poco rit.* *a tempo*
pp

ech - o. (Hum)
 lul - lar.

poco rit. *a tempo*
pp

rit.

rit.

rit.

rit.

*a tempo**p*

Sun - set glow - ing, glow - ing, glow - ing, slow - ly, slow - ly dis - ap - pear - ing,
 Kvæll - soins bloss sig stí - la sán - ker, kvæll - soins bloss sig stí - la sán - ker

Sun - set, a - glow, soon dis - ap - pears be - neath the
 Kvæll - so - lens bloss sán - ker sig, sán - ker sig

*a tempo**p*

Sun - set a - glow, soon dis - ap - pears be - neath the
 Kvæll - so - lens bloss sán - ker sig, sán - ker sig

a tempo

p a tempo

slow - ly, slow - ly dis - ap - pear - ing, dis - ap - pear - ing slow - ly, slow - ly,
 ner ut - i den lug - na, kla - ra, væg, ut - i den lug - na, kla - ra

sea. Slow - ly, so slow - ly, it dis - ap -
 ner, ner i den lug - na, den kla - ra,

sea. Slow - ly, so slow - ly, it dis - ap -
 ner, ner i den lug - na, den kla - ra,

dim. , *pp* 3 3

dis - ap - pear - ing 'neath the sea. (Hum)
vdg, ut - i den kla - ra vdg.

dim. , *pp*

pears be - neath the sea. (Hum)
kla ra vdg.

dim. , *pp* 3 3

pears be - neath the sea. (Hum)
kla ra vdg.

pp

(Hum)

dim. , *pp* 3 3

rit. 3

(Hum)

rit. 3

(Hum)

rit. 3

(Hum)

rit. 3

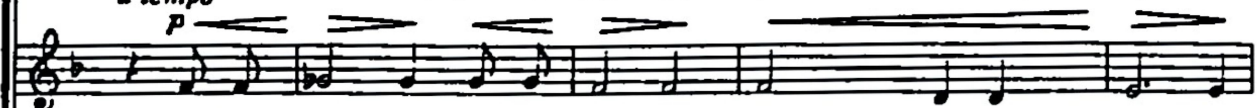
(Hum)

rit. 3

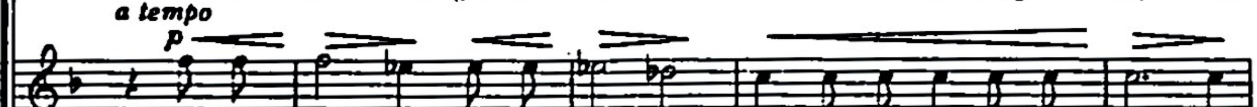
rit. 3

a tempo

Thru' the moun-tains, thru' the val - leys, lin - g'ring, the ech - oes
a tempo l - bland däl - der, grö - na kul - lar e - ko kring nej - den



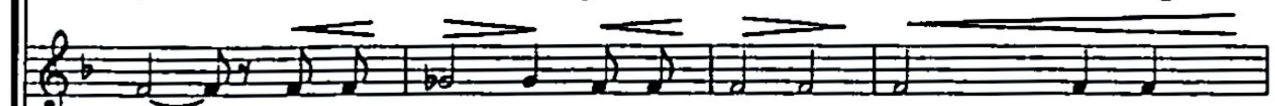
Thru' the moun-tains, thru' the val - leys, lin - g'ring, the ech - oes
a tempo l - bland däl - der, grö - na kul - lar e - ko kring nej - den



Thru' the moun-tains, thru' the val - leys, lin-g'ring, the ech-oes, the ech - oes
a tempo l - bland däl - der, grö - na kul - lar mång-dub-belt e - ko kring nej - den

*a tempo**a tempo*

sound. — Thru' the moun-tains, thru' the val - leys, lin - g'ring, the
 far... i - bland däl - der, grö - na kul - lar e - ko kring



sound. — Thru' the moun-tains, thru' the val - leys, lin - g'ring, the
 far... i - bland däl - der, grö - na kul - lar e - ko kring



sound. — Thru' the moun-tains, thru' the val - leys, lin - g'ring, the
 far... i - bland däl - der, grö - na kul - lar e - ko kring



Thru' the moun-tains, thru' the val - leys, lin-g'ring, the ech - oes, the
 l - bland däl - der, grö - na kul - lar mång-dub-belt e - ko kring



ech - oes sound. (Hum)
nej - den far...

ech - oes sound. (Hum)
nej - den far...

ech - oes sound. (Hum)
nej - den far...

ech - oes sound. (Hum)
nej - den far...

Performance markings include *ppp* (pianissimo) and *rit.* (ritardando). The score features complex piano accompaniment with triplets and slurs.